

# THE NETWORK

ST. ANDREW'S EPISCOPAL CHURCH

*St. Andrew's: Witnessing to the Good News of God in Christ.*

## Rector's Column

Dear friends,

Last July, as the old roof of the church started coming off, I began telling myself 'next summer things will be normal.' This declaration of hope helped me get through a year of construction, dust, noise and general disorder brought about by our much-needed renovation project. Nearly every day presented some interesting revelation that only work on a historic building can bring. Having been through a similar project in another church, none of this came as a surprise, and in fact at times it was very exciting as what started as an ambitious concept grew into a beautiful reality. So here we are, a year later, and even though the work is not quite finished, the results of what has been accomplished are wonderful. To learn more about what has been done and what lies ahead, please see Kathy McPherson's article on page 4.

Yet even with the heavy construction behind us, I still find myself wondering when things will get back to "normal." On a much larger scale that is a question we are all asking, not just about the physical structure of our church building but about all aspects of our lives. The economic downturn we are struggling through has brought many changes to our current way of life and our expectations for the future. Everyone is feeling the stress of these times, and many have had their lives turned completely upside down. What is clear is that whatever world emerges in the years to come, it certainly won't be a "normal" world as many of us would define it. Change of this magnitude is bound to cause enormous anxiety. I see it in the lives of the people who pass through the many doors of St. Andrew's and I can feel it in myself.

But what if, in the light of our economic uncertainty, we were to reexamine our understanding of what is "normal?" I think we might find that we had previously resigned ourselves to things we felt powerless to change ways because the power of the status quo was so strong. What, then, constitutes "normal?" In the world, as we have recently known it, it is not "normal" to: acknowledge our complete dependence on God, put one's own

needs aside in favor of another's, speak out against injustice, love our enemies or show them mercy. Such a way of life would be considered quite abnormal, even foolish. Yet these are all things Jesus urges us to do and calls us "blessed" in seeking to achieve them. (See the *Sermon on the Mount*, Matthew 5).

As I witnessed in the New York metropolitan area in the aftermath of the 9/11 attacks, a shift from a feeling of helplessness to a "new normal" (as it was called) finally took hold in the life of that city and its people. Following that crisis the people I knew largely fell into two groups. One group saw and seized the opportunity to reorder their lives in a way that is more spiritually fulfilling and materially sustainable. Others put a great deal of energy into attempting to reestablish exactly what they had known before, regardless of the costs to themselves, those around them and their own souls. I see some parallels from that crisis in what we are going through now. We are faced with similar choices. While it is important that we learn how to cope with what has happened to us and our society, what is even more important is how we use that experience in shaping what we can control of our future.

We will get through this.

The question before us all is what kind of people will we choose to be? When the dust finally settles, how will we come to define "normal?"

God bless,

*Fr. Alan*

Table of Contents	
Announcements.....	2
Finance.....	3
Stewardship.....	3
Church Restoration.....	4
Christian Formation.....	4
Music.....	5
Parish History.....	5
Parish Life.....	6
Calendars.....	7

## THE NETWORK

...is the newsletter of St. Andrew's Episcopal Church of Ann Arbor, Michigan. Articles are welcome, but may be subject to editing or abbreviation. The deadline for submissions for the September-October 2009 newsletter is August 10, 2009.

Please send submissions to Kate Riedel via e-mail to <communications@standrewsaa.org>

Receive *The Network* by email! To stop receiving paper copies of *The Network*, e-mail Kathy McPherson at <kmcperson@standrewsaa.org>

## St. Andrew's Service Schedule:

Sundays at 8:00; 9:15 (Family Service *in the Chapel*); and

10:00 am *Holy Eucharist*

Wednesdays at 7:00 am

*Holy Eucharist (in the Chapel)*

Wednesdays at 6:00 pm

*Evensong (in the Chancel)*

Thursdays at 5:30 pm

*Holy Eucharist and Healing*

Fridays at 12:15 pm

*Holy Eucharist*

First Saturday of the Month at 5:30 pm

*Oasis Evensong*

Childcare is available 9:00–9:45 am in the Kindergarten room (207) on the 2<sup>nd</sup> floor. A Nursery for infants through children aged 2 years is available during the entire 10:00 am service, located in room 204 (2<sup>nd</sup> floor). The older children are in class from 10:00 am until they join their families for communion later in the service.

## Upcoming Events

### J2A Art Fair Parking at St. Andrew's

Parking for the Art Fair will be available at St. Andrew's lot on **Saturday, July 18 only** from 9:00 am until 6:00 pm. As you know, this is an excellent location for proximity to all the fair activities. The J2A group has the opportunity to supervise this with proceeds benefiting their pilgrimage in 2010. Please help support this event and tell your friends too!

### Parish Picnic

Our annual Parish Picnic will be held **Sunday, July 19, at Island Park**, beginning with the 10:00 am Holy Eucharist and immediately followed by a potluck picnic and activities for the kids. The main dish, drinks, and place settings will be provided, please bring a dish to pass as listed below:

**A-F:** Side Dish

**G-M:** Salad

**N-S:** Desserts

**T-Z:** Bread

Please note: the 8:00 am service will be held at the church, as usual, but there will be **no 9:15 am Family Service** that day.

### Oasis Evensong

Due to the Labor Day holiday weekend, the September Oasis Evensong has been **rescheduled to Saturday, August 29**. Join us in the chapel for Evensong this summer on the following Saturday evenings at 5:30 pm:

**July 4**

**August 1**

**August 29**

### September Sunday Forum

The Sunday Forum this fall, beginning on September 13, will address the seven sacraments of the Church. "The sacraments are outward and visible signs of inward and spiritual grace, given by Christ as sure and certain means by which we receive that grace," (Book of Common Prayer, page 857) The form, origins, history, theology and modern use of Holy Baptism, Holy Eucharist, together with confirmation, ordination, holy matrimony, reconciliation of a penitent, and unction, will be discussed, along with how Christian formation is aided and shaped by them.

*-Fr Charles Witke, discussant*

### New Church School Year 2009-10

The fall term of Church School begins on Sunday, September 13. Registration takes place from 9:20 am until the beginning of Church School at 9:45 am.

### No EHM

Episcopal Health Ministries will not have a meeting on Tuesday, July 14 or August 11. Meetings will resume on Tuesday, September 8. Blood Pressure screening on the second Sundays of each month will continue as planned.

### Rededication Rescheduled

Due to additional work scheduled for our restoration project the Rededication Concert scheduled for Sunday, September 27 has been rescheduled for Sunday, February 14, 2010 at 4:00 pm.

### Save the Date!

On Sunday, October 4, at 4:00 pm, St. Andrew's will celebrate St. Francis of Assisi with a special Animal Blessing Service on the front lawn of St. Andrew's. All Animals welcome!

Operating Revenue and Expenses  
January 1 to May 30, 2009

Capital Campaign  
Financial Status Report  
as of May 31, 2009

	Actual	Budget	Over/Under +/-)	Income:	Since Inception
	Year-to-Date	Year-to-Date	YTD Actual vs. YTS Budget		
<b>Income</b>					
Plate Offerings	16,422	16,950	-528	Pledge payments	1,865,427
Pledge Payments	344,033	331,500	12,533	Memorial gifts	4,970
Other Income	4,565	9,650	-5,085	From special funds	237,203
From Special Funds	0	0	0	Grant	4,615
				Investment Income	33,526
				<b>Total Income</b>	<b>2,145,741</b>
<b>Total Income</b>	365,020	358,100	6,920	<b>Expenses:</b>	
				Consultant/Architect	295,613
<b>Expenses</b>				General Contractor	1,420,724
Diocesan Pledge	33,881	33,881	0	Other Project Costs	62,297
Other Outreach	26,828	26,625	203	Windows Restoration	208,266
Church Programs	26,971	23,200	3,771	Contingency	34,170
Salaries and Benefits	189,675	195,676	-6,001	Administrative	
Maintenance & Overhead	69,842	77,307	-7,465	and Miscellaneous	65,564
				<b>Total Expenses</b>	<b>2,086,634</b>
<b>Total Expenses</b>	347,198	356,689	-9,492	<b>End of Month</b>	
<b>Net</b>	17,822	1,411	16,412	<b>Fund Balance</b>	<b>59,107</b>

## 2010 St. Andrew's Annual Giving Campaign

*"The mission of St. Andrew's is to witness to the Good News of God in Jesus Christ."*

As a congregation our Christian ministries are carried out in many and varied ways. Whether by profession or offering volunteer service, or through acts of love and charity as a member of a social support organization we carry out God's work and demonstrate God's love in obvious and many more times in subtle and unassuming ways.

**We come together as a congregation** to find strength and support; we look to our clergy and fellow parishioners for guidance, education, commitment, and direction in performing our own prayerful acts of spreading God's love.

The Stewardship Committee is meeting to plan the **2010 Annual Giving Campaign**. As most of you know this is the annual parish drive which is the principle source of the funding absolutely vital to support and continue the ministries and physical operations of St. Andrew's. A year ago we wrote that the need is great; that is still true and many of us are witnessing a need greater than we have ever seen before in our lifetimes. Yet the ministry of providing financial support is a commitment that every member of the Parish can serve successfully no matter the amount of one's commitment. Your support, whatever it may be, goes a long way to serve the Lord in sustaining and improving the parish community and continuing those activities the St. Andrew's community has identified as Christian priorities.

**Each of us is personally asked** by Christ to build upon the foundation he laid. The stewardship of Christ's Church is the responsibility of all Christians. Christ revealed to us his genuine commitment to man and woman through his love and resurrection; likewise your pledge of financial support is your sincere commitment to love and sacrifice. Your financial support and commitment is personal, it's your private prayer, it is just you and God and it is a ministry that measurably secures and advances the St. Andrew's community.

**All this stewardship begins with God**; the grace bestowed upon us is God's infinite love, mercy and favor. It is through this love and understanding that we are blessed with the tools to grow and continue God's work and teachings. The Lord gives to us freely and without restraint, without conditions or demands. It is by this example that we can find the strength to do the same for our neighbors.

*--From the 2010 Annual Giving Committee*

## Church Restoration Update

As many of you have seen we are very close to completion of the major portions of our Restoration of the Church. There are several items remaining on our “punch list” that should be resolved on or near June 30.

Below is a list of the many things accomplished during this time:

- the slate and asbestos roofs have been replaced with new slate
- the stained glass and clerestory windows have been restored
- the exterior wood trim has been stripped, sanded, and repainted
- Page Hall has been re-wired, all the outlets have been grounded, and new fixtures have been hung there
- a new bathroom has been created in Page Hall
- the ceilings in both the men’s and women’s restrooms in the Rainbow Room area have been replaced
- the flooring on all three levels of Page Hall has been replaced
- all the plaster and walls have been repaired and repainted in Page Hall, the Sanctuary, the Nave and the Narthex
- the new stone stairway has been built at the west entrance
- the building’s stone has been tuck pointed
- the broken and heaved sidewalks have been replaced along Catherine Street and from the bell tower to the west entrance
- new emergency egress door hardware and exit signs have been installed
- landscaping is ongoing and will include grass along Catherine Street, irrigation, a few new plantings and mulch for the plantings, more in keeping with the historic nature of the building.

We have obtained bids to remove, rewire and reinstall the lighting fixtures in the church and as soon as we have an inspector from the city give us a go ahead we will begin. We will also be replacing the lighting dimmer panel and rewiring the circuits for the overhead lights.

We will be removing the pews in the nave to be stripped, repaired, sanded, re-finished and re-installed. A sample of what they will look like will be located in the cloister hall just north of the restrooms, across from the cloister entry door. This will happen in the 8-9 weeks between October 19 and mid December. During that time new “acoustical foam” pew cushions will be made, using a fabric in keeping with the historic period of the sanctuary. We will also be replacing the damaged brown tile flooring beneath the pews. Alternate seating for the sanctuary will be available during this period.

We are also in the process of obtaining bids from various roofing contractors for the five (5) flat roofs on the Parish Hall wing that have leaked and caused plaster damage, not only in the Parish Hall kitchen, but in the stairway to the second level, and other places in this building.

After these projects have been completed, we will once again assess the remaining funds and determine if money is available to repair or preferably reconstruct the parking lot. This project would likely happen next spring, if funds permit.

To date we have not borrowed any monies from the bank, thanks to many of you who have kept your pledges up to date and/or have paid early. We have about \$600,000 in outstanding pledges which, we have confidence, will be paid by the end of the campaign in April of 2010. We thank you so much for keeping your pledges current. If you are able to pay your third year installment(s) before the end of the campaign, we may be able to avoid borrowing and the associated interest costs entirely.

We once again thank you for your generosity, in these economic times, which has allowed this phase of the Master Plan to move forward.

*Kathy McPherson, for the Phase I Restoration Committee*

## New Fence for the Memorial Garden

Over the summer you will see some changes to the east entry to the Memorial Garden. The concrete canopy which partially covers the walkway from the North Sanctuary door to the covered sidewalk in the Garden will be removed. This will improve the sight lines into the Garden and the cloister.

Additionally, a seventy-inch tall fence (much the same as the current wrought iron fence there now) with a gate will be installed. Whenever there is a parish activity in the church or the parish house, the gate will remain open. When the last group leaves for the evening the gate will be locked and reopened the next morning. The Building Restoration Phase I Committee, the Finance Committee and the Vestry have seen and approved the prototype. It will be black and will have a Celtic cross.

If you currently have a key to the garden door the same key will work in the fence gate. With the instillation of this fence we hope to better preserve the sanctity of the consecrated ground in which many of you have loved ones interred or in which you have made plans to be interred. We are also concerned for the safety of our parishioners, staff and volunteers who leave the building in the late evening and arrive before dawn through a door that has no visual access to the street.

## Christian Formation

**A great big thank you:**

**To our Church School Staff** for 2008-09! You are a terrific, talented group!

**To our Church School members and their families** for coming to Church School so faithfully this year. We pray you have a wonderful, safe summer.

**Family Eucharist:** Sundays at 9:15 am in the chapel. The service runs 25 minutes and includes stories, songs, communion and an opportunity for little ones to learn about their faith. This service takes place every Sunday all-year round and had 27 families with 47 children in attendance at the end of May.

**Summer Church School continues through July 26** with three separate age groups: infants and toddlers (upstairs

in the nursery), 3's through Kindergarten (in the Morning Glories classroom), and first grade through seventh grade (in the Lounge). Church School begins at 10:00 am The older children will join their families at the Peace. Childcare will be available August 2 - September 6.

**“Christ’s Chosen”:** Our Marketplace Bible times summer camp took place June 16, 17, 18 at First Presbyterian Church. 40+ Church School members attended as well as a large group of adult volunteers. An update about their adventures will be in the next issue of *the Network*.

**J2A Art Fair Parking:** On Saturday, July 18, the J2A group will be parking cars all day during the Summer Art Fair to raise money for their 2010 Pilgrimage. The St. Andrew’s Catherine Street parking lot is a great location for those attending any of the Art Fairs. Please come take advantage of the convenient space and support our enterprising youth!

**New Church School Year 2009-10:** The fall term of Church School begins on Sunday, September 13. Registration takes place from 9:20 until the beginning of Church School at 9:45. All Church School families in our registry will be sent post card reminders later in August. If you are new to the church and have children (infants through senior high schoolers) please call the church office so we may place you on our mailing list.

**Fall Teaching Staff:** To those who have volunteered already, we say thank you so much for saying yes to this vital and exiting teaching ministry at St. Andrew’s.

**We are still looking for a few teachers and assistants for the upcoming school year.** We need two teachers with the preschool Morning Glories class (3’s and 4’s), one more kindergarten teacher, and one more fourth grade teacher. Please give serious consideration to sharing a small amount of your time on Sunday mornings with our children - the reward is priceless. A Church School staff gathering will be held on Wednesday, September 2, at 7:00 pm in the Lounge. This is an important orientation meeting for the entire teaching staff.

Faithfully,

Nancy Heusel

www.StAndrewsAA.org

## Music

### Music News for Fall 2009

#### CHOIRS

The St. Andrew’s Adult Choir will begin the fall season with a retreat/rehearsal on Saturday September 12 from 9:30 am to 1:00 pm including lunch and fellowship. The choir usually rehearses on Thursdays from 7:15 to 9:15 pm.

The St. Dunstan Handbell choir will begin rehearsing on Wednesday September 9, from 6:00pm-7:30pm in the Rainbow Room. They usually play once a month during Sunday liturgies, although this fall they will also be taking part in two special concerts.

The Cherubim and Junior Choirs will begin their season on Wednesday, September 16. The Cherubim Choir is for children ages K-2 (although we have had several precocious pre-schoolers join us as well!), and the Junior Choir is for youth in 3<sup>rd</sup>-8<sup>th</sup> grades.

If you would like to join any of these fine ensembles, please contact our Director of Music, Deborah Friauff at [dfriauff@standrweaa.org](mailto:dfriauff@standrweaa.org)

#### CONCERTS & SPECIAL SERVICES

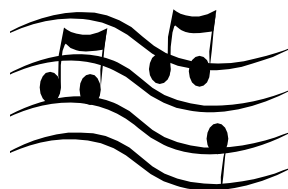
We are so blessed to have so many fine musicians in our midst at St. Andrew’s, and we will be calling upon these gifts and talents in a variety of ways to glorify God this year! Listed below are just a few of the events we have to look forward to.

#### Sunday, November 1, 4:00pm

*A Service in Commemoration of All Souls:* Featuring *Lux Aeterna* by Morten Lauridsen, sung by the St. Andrew’s Adult Choir.

#### Sunday, November 22, 10:00 am

*St. Andrew’s Feast Day:* Observed on the Feast of St. Cecilia, Patron Saint of Music. This will be a special Sunday morning indeed, with our traditional joyful Ann Arbor Pipe and Drum processions, plus Franz Schubert’s “Mass in G” as sung by the St. Andrew’s Adult Choir accompa-



nied by strings, in honor of St. Cecilia.

**Sunday, December 20, 2009 4:00pm**  
*King’s College Christmas Lessons and Car-*

## Parish History

*ols:* Our traditional preparation for the holiday season, featuring the scriptural unfolding of the Christmas story and the lovely traditional anthems and voluntaries offered by all of the St. Andrew’s Choirs.

Look for our *Music at St. Andrew’s* concert and service brochure early this fall, listing the complete 2009-10 season.

#### Marion Breck Memorial Window

The Marion Breck Memorial Window is the eighth window from the east end of the church on the south side (S8).

It is dedicated “In Praise of Mothers”. The central figure is a seated woman reading a book to one child seated on her lap, and another child standing beside her. The Virgin Mary with the infant Jesus is seen in the upper panel surrounded in the margins by lilies, traditional symbols of virginity and purity. A ribbon above and below the central seated figure quotes Proverbs 31:26: “She opens her mouth with wisdom and the teaching of kindness is on her tongue”, one of a series of answers to the question in Proverbs 31:10, “A capable wife, who can find?”.

Images in the margins represent other verses in the series: knitting in the upper left (31:19, “She puts her hands to the distaff and her hands hold the spindle”), jewels in the middle left (“She is far more precious than jewels”, 31:10), a kerosene lamp on the lower left (“Her lamp does not go out at night” 31:18), a plate with knife and fork and a basket of bread on the upper right (“She...provides food for the household” 31:15), a hand giving a coin to another on the middle right (“She opens her hand to the poor and reaches out her hands to the needy” 31:20). The image on the lower right, a hand on a young person’s head, is from Isaiah 66:13 “As a mother comforts her child, so I will comfort you”.

The lower panel depicts a woman, holding the hands of a boy on the left and a girl on the right, standing in front of a colonnade through which the Green Mountains can be seen. The quotation

## Parish Life

### EfM begins Fall Term on September 14

What do these happy people have in common: Ann Bell, Jim Briggs, Mary Eldridge, Barbara Mackey, Chandler Matthews, Leigh Magnuson, Marilynne Rush, and Kreg and Angela Sherbine? They are all graduates of St. Andrew's Education for Ministry class. On Monday, September 14, our EfM term will start up again. We are looking forward to meeting new enrollees as well as greeting our returning students: Tony Bowdler, Winnie Cook, Marty Davis-Merritts, Mark and Susan Hastings, and Bryce Kelley.

In asking who are the ministers of the church, our Prayer Book catechism cites lay persons first, then bishops, priests, and deacons.

The ministry of lay persons is to represent Christ and his Church; to bear witness to him wherever they may be; and, according to the gifts given them, to carry on Christ's work of reconciliation in the world; and to take their place in the life, worship, and governance of the church. (BCP p 855)

As the result of our Baptismal Covenant, all the people of God are ministers. Education for Ministry (EfM) was developed by the School of Theology at the University of the South at Sewanee over 30 years ago, and has enrolled thousands of students worldwide. In the four-year program, a group of from 6 to 12 students study the Bible and supplied texts. In addition, through reflecting on a scripture passage, a text, a film, a personal experience, or an artifact, students determine how the message speaks to their hearts and lives. An added benefit is that through weekly discussion, students bond with one another and form a closely knit group.

Although students are asked to commit to attend faithfully, read the supplied texts, and contribute in discussion, no exams or term papers are required. Students are also asked to commit to only one year at a time. Participants do not need to be members of St. Andrew's, or even Episcopalian.

The years are:

Year One: Hebrew Scripture

Year Two: Christian Scripture

Year Three: Church History to 1800

Year Four: Theological Choices

Here are views expressed by two former students:

*"EfM provided me, a lay person, with an opportunity to study scripture, theology, church history, with more depth and in a more structured way than would have been possible short of enrolling in a seminary. Another important benefit was the strong sense of community built among the participants by regular worship and sharing of insights in the process of theological reflection. EfM does require a large commitment of time, money, and effort, but the rewards are well worth it."* -Mark Chaffee

*"I was constantly awed and impressed by the depth of the group's seeking and discussion. The time commitment, two to four hours of home study a week, and the seminar meetings were well worth it. The four years flew by. EfM provides a wonderful opportunity to share your faith, your questions, and your insights, as well as to discover your ministry."*

-Margaret Nieman

More importantly, EfM is not:

A lecture series in which information is imparted from the "expert" to the students  
Bible study

A graduate school seminar

A place where there is "one right answer"

Group therapy (even though support and friendship are evident)

A venue for political activism

A substitute for your primary weekly worship experience

St. Andrew's EfM group meets on Monday evenings from 6:30 to 9:00 pm. Interested? Please contact Barbara Mackey, mentor or come to our coffee hour display in late August. For more information, including sample lesson plans, go online: [www.sewanee.edu/EFM](http://www.sewanee.edu/EFM)

above the lower panel, "Her children rise up and call her blessed" is from Proverbs 31:28. The clear glass insert just below the central figure was deliberately used to remind us of the Church's work in the greater world. It was recovered from the schoolhouse that Marion attended in Billings, New York.

The flowers in the margins are the State Flowers of the states in which Marion and Sam Breck lived during their 46 year marriage: the rose (New York), mountain laurel (Connecticut), purple lilac (New Hampshire) and apple blossom (Michigan). The pillars of the colonnade and the mountains in the distance in the lower panel are a reference to the pillars on the portico of Ames Hall of Green Mountain College in Poultney, Vermont, from which Marion graduated. The clear glass insert is from the one-room schoolhouse in Billings, New York, which Marion attended as a child. The central figure of the woman reading to children symbolizes Marion's involvement in early childhood literacy.

The window was given in memory of Marion Johanne Emmy Rudloff Breck by her husband, Sam Breck, and their sons, William and Robert.

The window was designed by Adam Smith, and crafted by the Willet Stained Glass Studio of Philadelphia. It was dedicated on October 24, 2004, Marion's 75th birthday.

## Parish Health

### Opportunities for Exercise

Now that we are enjoying a beautiful Michigan summer, consider walking or bicycling to church! Many members of St. Andrew's — of all ages — participated in our Lenten program, Walk to Jerusalem, and walking or bicycling to church is a way to continue with healthy activity, as well as save money on transportation costs. Your body, soul and savings account will thank you! And, of course, if you bicycle, always wear a helmet, even for short distances.



**St. Andrew's Community Garden  
Continues to Grow**

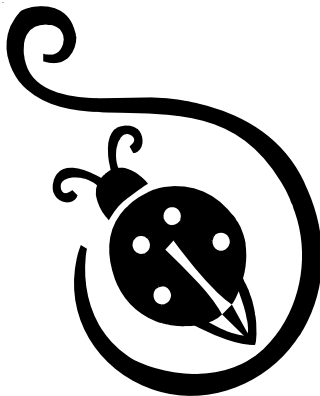
Started this spring, the St. Andrew's Community Garden is having a productive first year. Come take a look - we're located on the north side of the building inside the fence. You'll find peas, potatoes, peppers, cabbage, collards, cauliflower, broccoli, tomatoes and carrots and lots of beautiful flowers. All this produce is being donated to Food Gatherers as part of the Faith and Food Program that is new this year. We join with congregations all over the county who are growing the same things, as requested. Why? Because a recent study showed that:

1. There are more people attending food distribution programs.
2. There are fewer resources to go around.
3. More people want to eat healthy, fresh and locally grown produce.
4. Cost is the principle barrier to doing so.

Congregations can help solve this problem. And we get to have fun digging in the dirt in the process!

Many thanks to all those who have helped donate supplies, build raised beds, shovel compost, plant vegetables, beautify the surroundings, and weed and water every week. The summer church school is also helping tend the garden as part of their summer curriculum. There are many ways to get involved. Would you like to help? Please contact Merilynne Rush at [mrush@provide.net](mailto:mrush@provide.net) or 734-424-0192 for more information.

**The St. Andrew's Garden will be featured in the "Big Community Harvest Garden Tour"** on July 22 and August 1, along with other Faith and Food gardens, Edible Avalon, Growing Hope, and the Gathering Farm at Food Gatherers.



**St. Andrew's Calendar for the Month of July**

**Events Recurring Weekly:**

**Sundays:**

- 8:00 & 10:00 am: Holy Eucharist (C)
- 9:15 am: Family Eucharist (Cpl)
- 10:00 am: Church School
- 11:30 am: Greek Bible Reading (Lib)

**Mondays:**

- 7:30 pm: Alcoholics Anonymous (PH)

**Tuesdays:**

- 4:00 pm: Tea (L)

**Wednesdays:**

- 7:00 am: Holy Eucharist (Cpl)
- 6:00 pm: Evensong (Cn)

**Thursdays:**

- 9:30 am: Bible Study (L)
- 5:30 pm: Holy Eucharist & Healing Service(C)

**Fridays:**

- 12:15 pm: Holy Eucharist (C)
- 7:30 pm: Alcoholics Anonymous (PH)

**Saturdays:**

- 9:00 am: Altar Guild Preparation

**Friday July 3**

*Office Closed*

**Saturday, July 4**

*Independence Day*

- 5:30 pm: Oasis Evensong

**Sunday, July 5**

- 9:00 & 11:30 am: History Tour
- 11:30 am: SASA (L)
- 7:00 pm: Contemplative Prayer

**Tuesday, July 7**

- 5:30 pm: Outreach (L)

**Wednesday, July 8**

- 7:30 pm: History Committee (L)

**Sunday, July 12**

- 8:30 & 11 30 am: Blood Pressure Screening

**Wednesday, July 15**

*Ann Arbor Art Fairs*

**Thursday, July 16**

*Ann Arbor Art Fairs*

**Friday, July 17**

*Ann Arbor Art Fairs*

**Saturday, July 18**

*Ann Arbor Art Fairs*

- 10:00 am: J2A Park Cars for Art Fairs

**Sunday, July 19**

*Parish Picnic at Island Park*

- 2:00 pm: PFLAG

- 7:00 pm: Contemplative Prayer

**Wednesday, July 22**

- 6:30 pm: Book Discussion and Pot Luck (L)

**St. Andrew's Calendar for the Month of August**

**Events Recurring Weekly:**

**Sundays:**

- 8:00 & 10:00 am: Holy Eucharist (C)
- 9:15 am: Family Eucharist (Cpl)
- 11:30 am: Greek Bible Reading (Lib)

**Mondays:**

- 7:30 pm: Alcoholics Anonymous (PH)

**Tuesdays:**

- 4:00 pm: Tea (L)

**Wednesdays:**

- 7:00 am: Holy Eucharist (Cpl)
- 6:00 pm: Evensong (Cn)

**Thursdays:**

- 9:30 am: Bible Study (L)
- 5:30 pm: Holy Eucharist & Healing Service(C)

**Fridays:**

- 12:15 pm: Holy Eucharist (C)
- 7:30 pm: Alcoholics Anonymous (PH)

**Saturdays:**

- 9:00 am: Altar Guild Preparation

**Saturday, August 1**

- 5:30 pm: Oasis Evensong

**Sunday, August 2**

- 9:00 & 11:30 am: History Tour
- 11:30 am: SASA (L)
- 7:00 pm: Contemplative Prayer

**Tuesday, August 4**

- 5:30 pm: Outreach (L)

**Sunday, August 9**

- 8:30 & 11 30 am: Blood Pressure Screening

**Monday, August 10**

*Network Deadline*

**Wednesday, August 12**

- 7:30 pm: History Committee

**Sunday, August 16**

- 2:00 pm: PFLAG (L)
- 7:00 pm: Contemplative Prayer

**Tuesday, August 18**

- 6:00 pm: Finance Committee (L)

**Tuesday, August 25**

- 6:30 pm: Vestry Meeting

(C): Church; (Cn): Chancel; (CL): Choir Loft; (Cpl): Chapel; (PH): Parish Hall; (L): Lounge; (LE): Lower Education Room; (Lib): Library



ST ANDREWS CHURCH  
306 N DIVISION ST  
ANN ARBOR MI 48104-1497

NONPROFIT  
ORGANIZATION  
US POSTAGE PAID  
PERMIT NO. 288  
ANN ARBOR MI

